

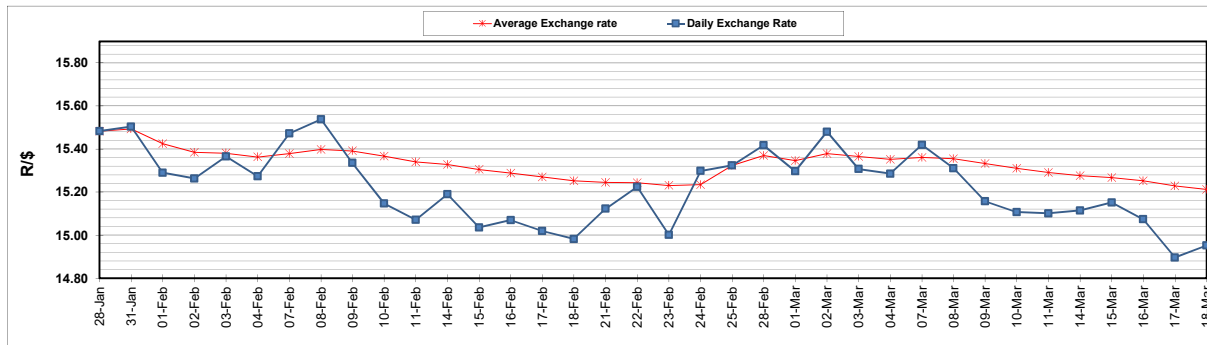
	PETROL 95 ULP	PETROL 93 ULP & LRP	DIESEL 0.05%	DIESEL 0.005%	ILL. PAR.
GAUTENG PUMP PRICE (SA c/l) AS FROM 02/03/2022	2,160.000	2,135.000	-	-	-
WHOLESALE PRICE (SA c/l) AS FROM 02/03/2022	-	-	1,948.880	1,955.280	1,318.688
SINGLE NATIONAL MAXIMUM RETAIL PRICE	-	-	-	-	1,690.000
BASIC FUEL PRICE - 18/03/2022 (SA c/l)	1,231.809	1,207.083	1,359.629	1,379.711	1,332.390
PRESS RELEASE CONTRIBUTION TO BFP 02/03/2022 - 18/03/2022 (SA c/l)	1,100.270	1,085.270	1,107.630	1,114.030	1,097.128
UNIT OVER/(UNDER) RECOVERY - 18/03/2022 (SA c/l)	(131.539)	(121.813)	(251.999)	(265.681)	(235.262)
AVERAGE BASIC FUEL PRICE 25/02/2022 - 18/03/2022	1,270.388	1,247.427	1,358.446	1,378.157	1,310.336
AVERAGE UNIT OVER/(UNDER) RECOVERY 25/02/2022 - 18/03/2022	(194.613)	(186.652)	(275.003)	(289.064)	(235.896)

### ANALYSIS MOVEMENT OF AVERAGE OVER/(UNDER) RECOVERY

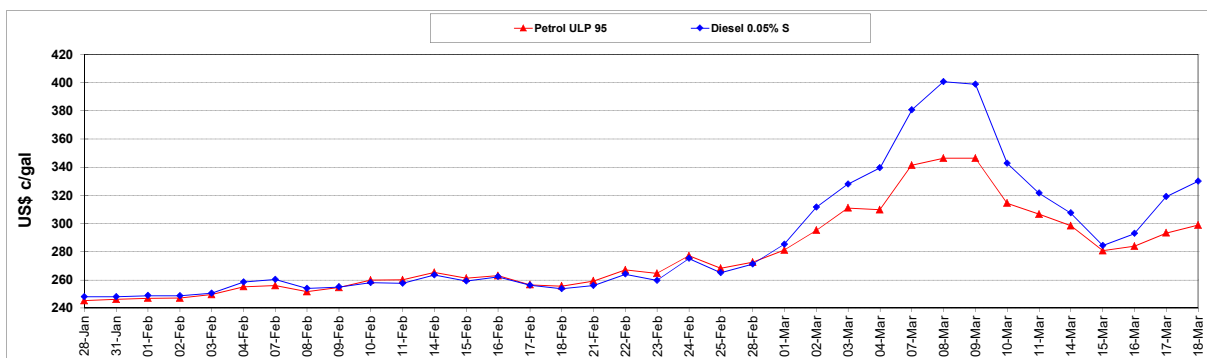
	PETROL 95	PETROL 93	DIESEL 0.05%	DIESEL 0.005%	ILL. PAR.
- MOVEMENT IN INTERNATIONAL PRODUCT PRICES	(196.467)	(188.472)	(276.985)	(291.075)	(237.807)
- MOVEMENT IN EXCHANGE RATE	1.854	1.820	1.982	2.011	1.912
AVERAGE UNIT OVER/(UNDER) RECOVERY 25/02/2022 - 18/03/2022	(194.613)	(186.652)	(275.003)	(289.064)	(235.896)

### R/\$ EXCHANGE RATE - (R/\$14.9525 - 18/03/2022)

#### EXCHANGE RATE USED IN BASIC FUEL PRICE



#### INTERNATIONAL PRODUCT PRICES OF BASKET USED IN BASIC FUEL PRICE



#### BASIC FUEL PRICE IN SA CENTS PER LITRE

